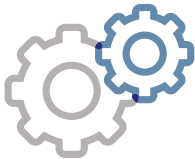


CONSORTIUM QUARTERLY CONNECTIONS



MESSAGE FROM THE CENTRAL TEAM:



This newsletter marks a time of transition and celebration for the Consortium. We have realized significant transformation in the initial work of the participating sites and partners. We have taken significant steps towards the development of a “learning health system culture” where individuals and organizations actively engage in self-reflection, share expertise, and work to implement structure, process and outcome indicators and related best practices. Our first Ontario provincial report card summarizes work on six prioritized domains of SCI rehabilitation including emotional wellbeing, sexual health, walking, wheeling, urinary health and skin integrity. This success is somewhat bittersweet in that our visionary partner, Ontario Neurotrauma Foundation, has had to close its doors this spring and we won’t benefit from ONFs continued leadership and stewardship and ongoing support.

However, we are pleased to announce that the Ontario Ministry of Health and Long Term Care has agreed to continue supporting this important work and Praxis Spinal Cord Institute has also joined in during this time of transition to support an expansion of the Consortium across Canada - (See new Consortium members on next page).

IN THIS ISSUE:

Central Team Message .....	1
Network Expansion .....	2
SCI IEQCC Evaluation Team .....	2
Message from the Data Team .....	3
IES Spotlight .....	4
Focus On: Leadership .....	5
CSCIRA 2021 Abstracts/Posters .....	6
Toronto CSCIRA 2021 Abstracts/Posters ...	7
Teach Corner! .....	7
SCI-O Update .....	8
CSCIRA Conference .....	8



SCI IEQCC Network Meeting

Date: October 20, 2021  
Time: 12 – 1pm EST  
Venue: Zoom

## NETWORK EXPANSION



The Consortium is expanding nationally through the support of Praxis Spinal Cord Institute. The new sites joining the network include:

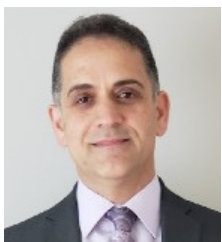
- 📍 Nova Scotia Rehabilitation Centre (NSRC) - **Halifax, Nova Scotia**
- 📍 Stan Cassidy Centre for Rehabilitation (SCCR) - **Fredericton, New Brunswick**
- 📍 The Queen Elizabeth Hospital (QEH) - **Charlottetown, Prince Edward Island**
- 📍 Glenrose Rehabilitation Hospital (GRH) - **Edmonton, Alberta**
- 📍 Foothills Medical Centre (FMC) - **Calgary, Alberta**

Each of these sites will be supported by community partners and in the next Newsletter we hope to provide much more information about the new, expanded Consortium!

## THANK YOU DATA ANALYSIS TEAM!

The Consortium highlights our data analysts who worked tirelessly to ensure that our data is of the best quality and produced our first SCI provincial report card.

**FARNOOSH FARAHANI** works as a senior research coordinator at KITE Research Institute and is the Evaluation Manager for the Consortium. Having worked in spinal cord injury rehabilitation at Toronto Rehab's Lyndhurst Centre for over 10 years, Farnoosh has an interest in health service research focused on improving quality of care for patients.



**MOHAMMAD ALAVINIA** has been a member of the NET Team at the Lyndhurst Centre within UHN since 2014, where he participated in the design, implementation, and evaluation of care indicators for SCI/D rehabilitation. Currently, he works as a Biostatistician II at the KITE Institute and UofT Department of Medicine in the division of Physical Medicine and Rehabilitation.



**MOHAMMADREZA AMIRI** is a postdoctoral fellow at KITE Toronto Rehabilitation Institute, UHN. His research interests have focused on decision modeling, quantitative analysis, evidence synthesis, and interactive health care data visualization.



## A MESSAGE FROM THE DATA TEAM:

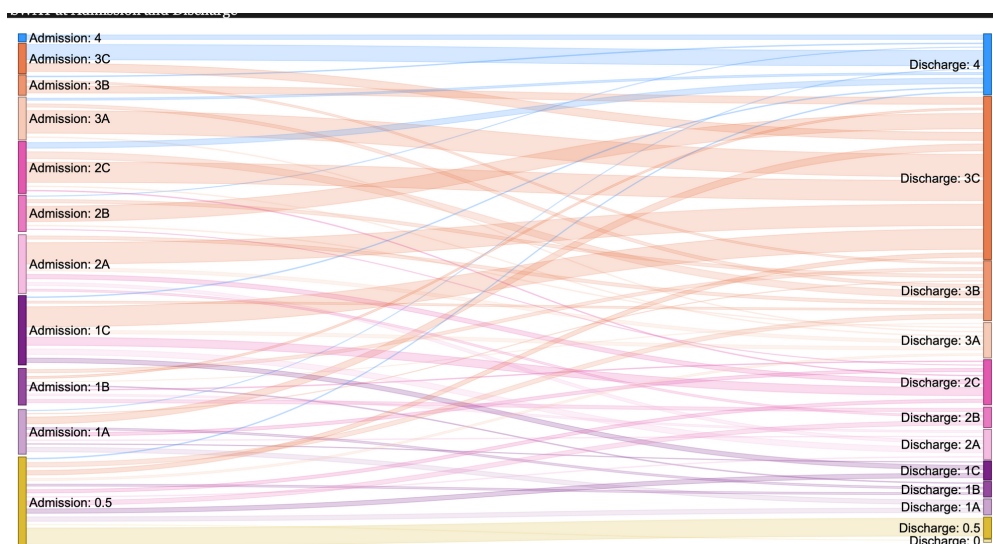
An important component of Quality Improvement is the evaluation of processes and their impact within a practice, with the aim to use this knowledge to make informed decisions and provide effective health services. To ensure robust analysis of data across five rehab sites in Ontario, the Data Analysis Team (DAT) developed a detailed statistical analysis plan and data collection spreadsheets for the Consortium's prioritized domains as well as The National Rehabilitation Reporting System's (NRS) baseline characteristics. Following data collection and transfer in March 2021, the DAT embarked on comprehensive data cleaning and statistical analysis to ensure appropriate and accurate reporting.



### PROVINCIAL REPORT CARD



Baseline (2018-2019) and Consortium term (2020) NRS data as well as the structure indicators collected from staff across rehab sites were presented in the form of provincial and site-specific report cards. Stratified by sex, etiology, severity, and level of injury, the process and outcome indicators for each domain were also reported. Interactive visualizations of indicators such as the Sankey diagram seen here were created to accompany the report cards. These visualizations allow the users to select or filter the results as needed. Accurate documentation, collection, and analysis of indicator data is key to presenting an overall picture of performance within a given domain and offer ongoing record of the impact of implementation strategies over time. We look forward to working with sites for continuous evaluation and reporting of Consortium activities.



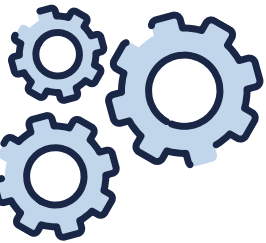
This Sankey diagram shows how Standard Walking Assessment Tool (SWAT) stages progress from admission (on left) to discharge (on right) following rehab care amongst the Ontario sites.



## IMPLEMENTATION & EVALUATION SPECIALISTS

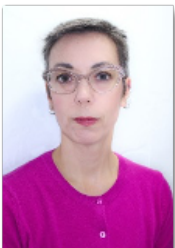
### LYNDHURST CENTRE, TORONTO REHAB., UHN

We are fortunate to have a dedicated and hardworking team of IESs in Toronto. Because of the capacity of UHN, the Toronto team decided to split the IES role among clinicians from different backgrounds to help support implementation at the site. They play an important role in championing and supporting their local team to implement the best practice indicators.



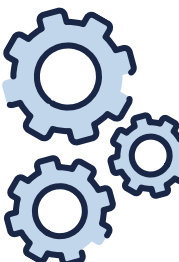
**CAROL SCOVIL** is a rehab engineer in the Spinal Cord Rehab Program, Toronto Rehab, UHN. Her interests include assistive technology, pressure injuries, fall prevention, knowledge translation, and best practice implementation in SCI rehabilitation in Canada and Nepal.

**NELLY VENTRE** is the sole practitioner SLP at UHN TRI Lyndhurst Centre clinically focusing on interventions for people experiencing oropharyngeal dysphagia, an increased risk of aspiration pneumonia, as well as changes to their voice quality or other communication skills as a result of a SCI injury or condition. She participates in various quality improvement initiatives through the program including acting as a PODS facilitator and a Caring Safely faculty and coach.



**CARRIE MIZZONI** has been an occupational therapist at the Lyndhurst Centre for over 13 years in both inpatient and outpatient services. Her research has been in exploring the therapeutic benefits of art, SCI and quality of life. Carrie has completed the UHN Emerging Leaders program and the Stepping Stones Teacher Development Certificate and has an interest in the education of patients, family, and student OTs and in advancing practice in SCI rehabilitation.

**CHELSEA WONG** has worked in spinal cord rehabilitation as a physiotherapist for three years in both inpatient and outpatient capacities. She continues to strive for excellence in clinical practice, and is excited to participate in the implementation of best practices for better patient care.





## FOCUS ON: LEADERSHIP

### PARKWOOD INSTITUTE REGIONAL REHAB. - ST. JOSEPH'S HEALTH CARE LONDON

Like many other Rehab centers, the SCI Program at Parkwood Institute faced challenges presented by the COVID-19 pandemic. Throughout the pandemic, Parkwood was able to maintain inpatient SCI rehabilitation services however outpatient services reverted to virtual only for a period of time during Wave 1. The Parkwood team did an impeccable job throughout this period to ensure quality patient care while implementing best practice interventions.

In addition to continuing with strong work in the emotional well-being, sexual health, walking, and wheeled mobility domains, another big success for the team has been the involvement of Nursing staff and Physiatrists in the site implementation teams to support with the implementation of tissue integrity and UTI domains. The team developed a skin check calendar for patients to document skin checks and a local UTI checklist which are being implemented on the units.

The Consortium celebrates the Site Leaders, Andrea Lee and Dr. Ali Bateman for their commitment to encouraging and supporting the IESs and site implementation teams in implementing best practices to improve the quality of care.

Andrea has worked in Rehabilitation leadership in a hospital setting for over 30 years, the last 5 at Parkwood Institute as the Director of the Rehabilitation Program. Andrea has been actively involved in the Provincial Rehab Care Alliance (RCA) including various sub committees. Patient and family engagement in healthcare planning and decision-making is a primary area of interest.

Dr. Bateman recently joined the team as a Site Lead. She is a consultant physiatrist in acquired brain injury and spinal cord injury rehabilitation and the electrodiagnostic laboratory at the Parkwood Institute. She is a member of the SIT team for the UTI domain and has been working on a quality improvement initiative related to cardiometabolic health in SCI. Her academic interests include knowledge translation, quality improvement, and patient safety, with a focus on achieving best practices to improve the quality of care and rehabilitation experience for persons with spinal cord injury and brain injury.



**DR. ALI BATEMAN**



**ANDREA LEE**



**SCI-IEQCC ABSTRACTS/POSTERS - CSCIRA 2021****CENTRAL****MANUSCRIPT**

Bateman EA, Sreenivasan VA, Farahani F, Casemore S, Chase AD, Duley J, Evbuomwan IK, Flett H, Ventre A, Craven BC, Wolfe DL. **Improving practice through collaboration: Early experiences from the multi-site Spinal Cord Injury Implementation and Evaluation Quality Care Consortium.** 2021 National SCI Conference Issue in *Journal of Spinal Cord Medicine*

**ABSTRACTS**

Chase A, Cornell S, Demers MJ, Duley J, Floriancic B, Giurleo C, Mizzoni C, Plourde K, Scovil C, Vandenwyngaert J, Ventre A, Wong C, Flett H, KrasDupuis A, Evbuomwan I, Farahani F, Craven BC, Wolfe DL. **View from the front lines: The Spinal Cord Injury Implementation and Evaluation Quality Care Consortium.** 2021 National SCI Conference. Toronto, Canada. Poster



Farahani F, Amiri MR, Alavinia SM, Craven BC. **Evolution of a Spinal Cord Injury Implementation and Evaluation Quality Care Consortium data strategy: It's more than just the numbers.** 2021 National SCI Conference. Toronto, Canada. Speaker

Farahani F, Wolfe DL, Evbuomwan I, Craven BC, and the SCI IEQCC Group. **Network initiation, structure, and progress in rehabilitation care: The Spinal Cord Injury Implementation and Evaluation Quality Care Consortium.** 2021 National SCI Conference. Toronto, Canada. Poster





## WELL DONE TORONTO! - CSCIRA 2021



Jeyathevan G, Jaglal S, Hitzig SL, Linassi G, Mills S, Noonan V, Anzai K, Clarke T, Wolfe D, Bayley M, Aslam L, Farahani F, Alavinia M, Omidvar M, Craven BC. **Towards a better approach to personalized self-management: Adapting the health education impact questionnaire to measure self-management skill acquisition among adults with spinal cord injury or disease.** 9th National Spinal Cord Injury Conference - accepted for a podium presentation and received 2nd place in the 'Clinical/Best Practice Application' category

Craven BC, Amiri MA, Flett H, Mizzoni C, Scovil C, Wong C, Ventre A, Mills S, Jeyathevan G, Guy K, MacRitchie I, Mighty G, Farahani F, Cripps-McMartin P. **Patient perspectives regarding a 7-day therapy model during the onset of COVID-19.** 2021 National SCI Conference. Toronto, Canada. Poster

Scovil C, Grummitt J, McKay M, Yao C, Farahani F, MacRitchie I, Flett H. **Implementing depression and anxiety screening for inpatient SCI rehabilitation.** 2021 National SCI Conference. Toronto, Canada. Poster

Scovil C, Ventre A, Mizzoni C, Wong C, Plourde K, Mills S, Farahani F, Guy K, MacRitchie I, Flett H. **Capturing patient experience to support quality improvement initiatives.** 2021 National SCI Conference. Toronto, Canada. Poster



The Consortium uses the Active Implementation Framework developed by [National Implementation Research Network](#) and adapted for our purpose. A key part of this implementation framework involves analyzing drivers to support implementation.

Implementation drivers are the things that may exist in your setting that help implementation of the practice be more successful. Drivers can take many forms, they could be training programs or email notifications that remind you when an assessment is due.

To determine what drivers may help your implementation be most successful, a site implementation team assesses what is in place in your organization that can help make sure the practice happens routinely. By systematically reviewing the categories of the drivers seen in the diagram (i.e. coaching, fidelity, systems intervention, etc.), one can come up with an implementation action plan.

### TEACH CORNER: IMPLEMENTATION DRIVERS



Source: Drivers Best Practices Assessment. Version 2.7 © 2019 NIRN-UNC

## SPINAL CORD INJURY ONTARIO (SCI-O) UPDATE

Cortree Disability Education Centre



The Cortree Disability Education Centre provides practical knowledge and resources focused on helping people with disability stay healthy, make their homes accessible, get back to work and live the lives they choose.

The website contains information for persons with disability, their families and caregivers.

In response to COVID-19, Cortree is available to all for free! Click on the link to access Cortree:

<https://sciontario.org/support-services/resources/cortree-online-learning/>



### Consortium Featured in OHA News!

"The Consortium has provided a platform for care providers to share knowledge, expertise, and reflect on best practice indicator implementation, helping to create a learning health system. This exciting work is transforming culture and measuring what matters, while focusing on equity and patient priorities."

For more info, use this [link](https://www.oha.com/news/enhancing-care-for-spinal-cord-injury-patients-everywhere/):

<https://www.oha.com/news/enhancing-care-for-spinal-cord-injury-patients-everywhere/>

### INNOVATIONS IN CARE

9<sup>TH</sup> NATIONAL SPINAL CORD INJURY CONFERENCE

SAVE THE DATE: NOV 16 - 18, 2021

Meeting may be in person at the Beantfield Centre, Toronto, (ON)

Due to the ongoing climate this conference may be a virtual or hybrid meeting.

Details are to follow.



### CONSORTIUM OPERATIONS TEAM



DR. CATHY CRAVEN  
EVALUATION LEAD & MANAGER



FARNOOSH FARAHANI



DR. DALTON WOLFE



IVIE EVBUOMWAN  
IMPLEMENTATION LEAD & MANAGER

For feedback or future contributions, contact:

FARNOOSH FARAHANI  
Evaluation Manager  
[farnoosh.farahani@uhn.ca](mailto:farnoosh.farahani@uhn.ca)

OR

IVIE EVBUOMWAN  
Implementation Manager  
[ivie.evbuomwan@sjhc.london.on.ca](mailto:ivie.evbuomwan@sjhc.london.on.ca)