

SCI CONSORTIUM QUARTERLY CONNECTIONS

MESSAGE FROM CENTRAL TEAM

Now that we have clear directions on our updated funding and are focused on learning and working together across the country, we are happy to share another edition of Quarterly Connections. A key development over the past few months has involved enhancing activities and connections across the Implementation Evaluation Specialist group.

In this issue we highlight two items that will reflect ongoing features in the newsletter. Going forward, we will strive to provide more information about implementation science through the "Implementation Corner" - where we will provide more details on evidence-informed strategies grounded in implementation science that are also consistent with local context as well as furthering the the Consortium mission (i.e., optimal and equitable care).

We also highlight specific innovations at Consortium sites. This issue contains some exciting work being done in Kingston at Providence Care involving enhancing access to care for indigenous peoples through the use of an Indigenous Transition Facilitator.

If anyone has something they would like to highlight for future issues - see page 8 for info on providing content!



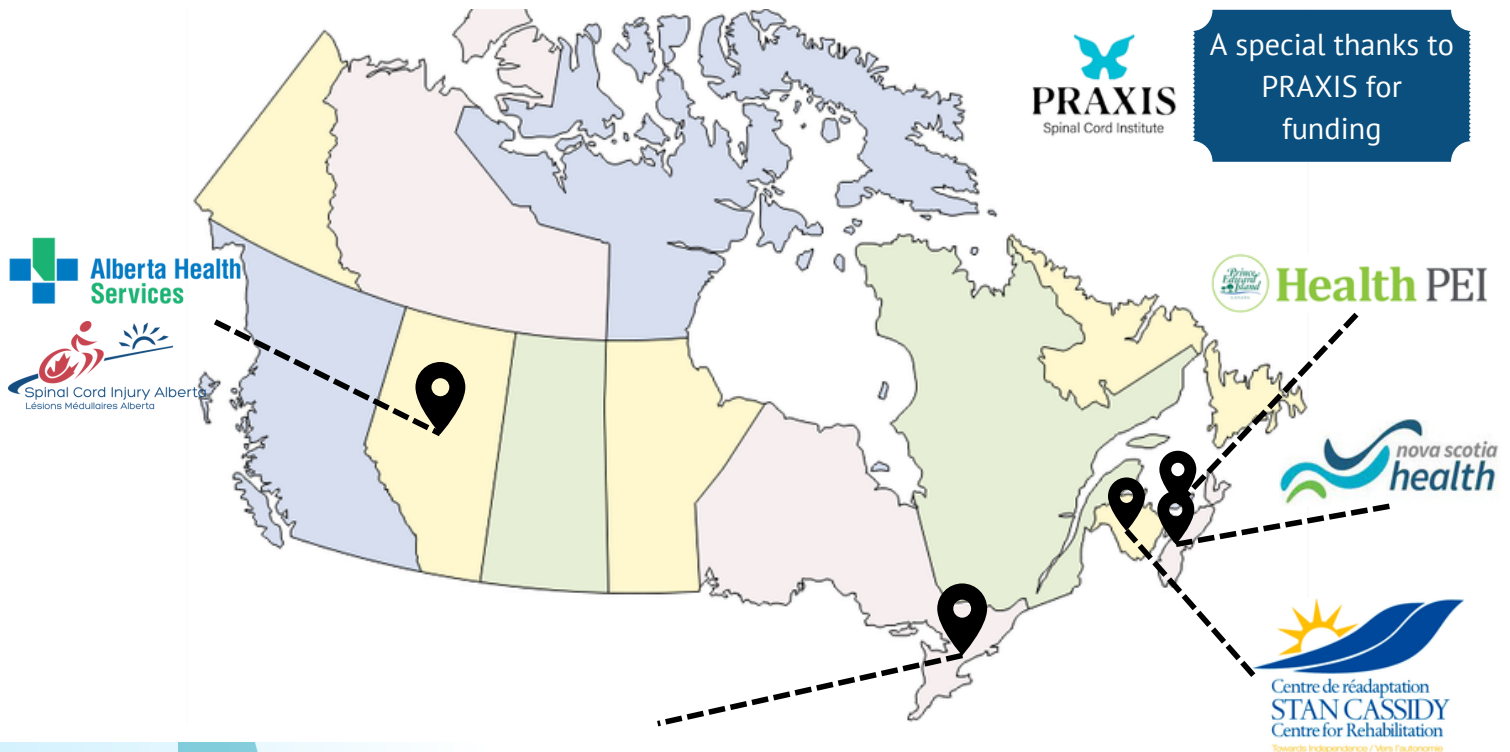
Content:

IN THIS ISSUE:

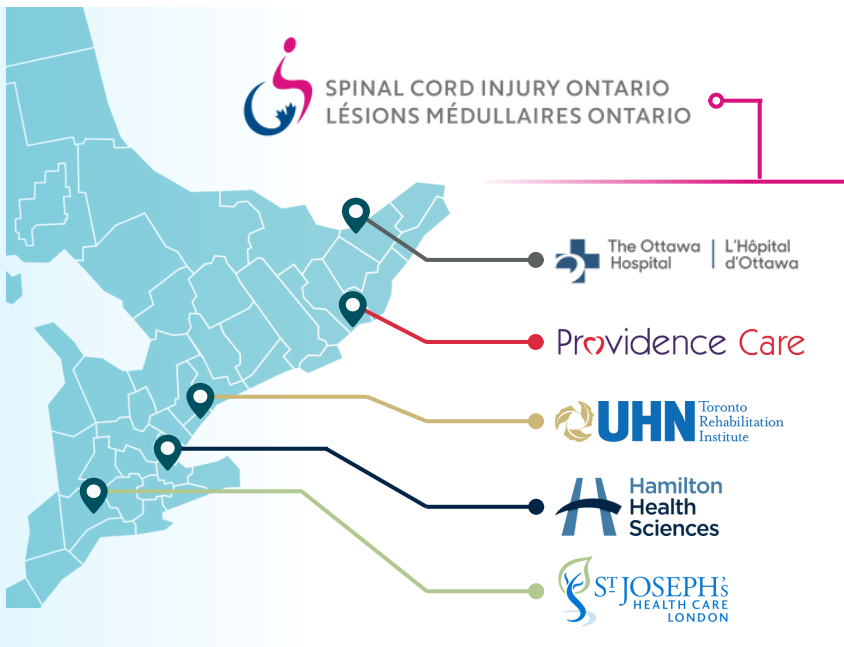
Central Team Message	1
Reintegrating National Sites	2
Implementation Corner	3
Providence Care	4
New Members	5
Possibilities Project+	6
Spinal Cord Essentials	7
Consortium Updates	8
National Conference	9

REINTEGRATING NATIONAL SITES

We are working to integrate sites across Canada and have re-engaged Alberta and the Atlantic sites! Thank you for the support in Edmonton, PEI, Nova Scotia, and New Brunswick. As we continue to introduce more sites, we hope to become more unified in our practices and knowledge.



A special thanks to PRAXIS for funding



A special thanks to MOH for funding Ontario Sites



INTRODUCING IMPLEMENTATION CORNER

We will be starting an "Implementation Corner" to highlight some key principles to implementing practice. This is to assist readers in understanding the core steps and how best to begin the process of implementing practices well and sustaining what has been put in place. In successive newsletters we will dive deeper into the key steps shown below. If there are any suggestions or topics related to implementation, please message Jordan Eggiman-Ketter to have it featured in the subsequent "Implementation Corner" segment.

Segment 1: Implementation Steps

STEP 1: Form a Team

- Form a team that involves all stakeholders (e.g., clinicians, researchers, patients, and administrators)

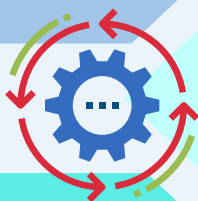


STEP 2: Engage Team

- Bring people together with relevant expertise (e.g., subject matter, project management, evaluation, IT, etc.)

STEP 3: Define Current & Future State

- Where are you now and where would you like to be?



STEP 4: Create a Plan

- What needs to be in place? (Drivers Analysis)
- Consider Data management strategies, training, coaching, communication, etc. (Implementation Action Plan)

STEP 5: Implement & Improve

- Putting your plan in place (Improvement Cycles)



FEATURING PROVIDENCE CARE!

Indigenous Transition Facilitator (ITF)

Main Purpose

This service aims to help self-identified Indigenous patients to access equitable care through regional and federal healthcare system, programs and benefits. ITF helps community members access health care outside of their community, within hospitals, and assists patients transitioning into the community (i.e., home, long term care homes, etc.)



Providence Care

Key Points



- Have a full FTE position as part of the patient flow team
- ITF is key in helping navigate communication by taking part of meetings, touching base with the patient's family
- Facilitate use of resources available for Indigenous patients in the community
- Provide cultural supports and resources
- Involve with discharge planning of Indigenous patients back to their home community or next location

More Information

The ITF role serves self-identified patients with the aim to change the way health care is accessed and delivered for Indigenous peoples by participating in many groups specific to Indigenous health care and palliative care.



For more information, please visit their website at:

<https://providencecare.ca/providence-care-hospital/patient-client-resources/indigenous-transition-facilitator/>

WELCOME NEW MEMBERS

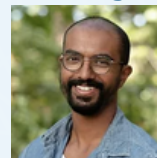


Andrea Brown



*Implementation Mentor,
Toronto*

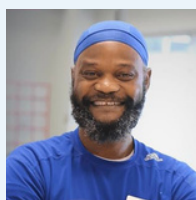
Suban Kangtharan



*Finance and Data Transfer
Specialist, Toronto*

Juffah Tamula

*Physiotherapist, Implementation
and Evaluation Specialist,
Charlottetown*

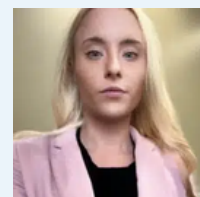


Health PEI



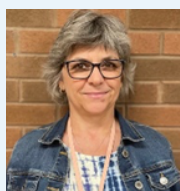
Kendra Erhardt

*Peer Coordinator, SCI Alberta,
Implementation and Evaluation
Specialist, Edmonton*



Carmen Carmazan

*Physiotherapist, SIT Team
Member, Hamilton*



Heather Scott

*Implementation and Evaluation
Specialist, Community Partner with
Glenrose Alberta, Edmonton*



Jordan Eggiman-Ketter

*Implementation Support,
London*



INTRODUCING...

THE POSSIBILITIES PROJECT+

What is the Possibilities Project+

THE
POSSIBILITIES
PROJECT+

Powered by
SCI Ontario

- The Possibilities Project Plus (PP+) is affiliated with St. Joseph's Health Care London and in partnership with Spinal Cord Injury Ontario (SCI Ontario)
- **Objective:** create an online platform that facilitates the transfer of assistive technologies (free of charge) by creating a "swap-shop". The PP+ works to connect persons in need of essential medical equipment to individuals looking to donate.
 - This "Kijiji-like" site allows individuals to (1) "**Create a Listing**" and post gently used assistive devices, and (2) "**View a Listing**" to find a device that best supports their needs
 - As of right now, transportation of equipment will occur between the donor and the receiver as the PP+ website aims to connect individuals and improve the accessibility of assistive devices

Call to Action!



Public Launch Date: August 29th, 2023



The PP+ needs your help! The team is currently working through transitioning from the beta testing phase. To ensure all Risk and Privacy requirements are met, this testing phase will employ the following controls:

1. This site will only be active among clinicians and employed staff members of SCI Ontario and each of the five Consortium Sites.
2. Only employees with an organizational email will be approved to access site features and be able to: a) Create an Equipment Listing, b) View Equipment Listings, and c) Contact an Equipment Donor.
3. If anyone is interested in helping us by using PP+, we will provide a person to work with you and help you through the process

We are requesting support from clinicians to **work with their patients who may have needs for specific equipment(s)**, or who may have **unused equipment for donation**. Ways to contribute and get involved are:

Donate Equipment:

1. Work with your clients to post equipment listings to help us populate the site.
2. Take pictures of any un-used equipment and our team will help create the listing for you!

Receive Equipment:

1. Do you need equipment? Contact us and we can help match you to a prospective donor!

Please contact Abby Spadzinski at abby.spadzinski@sjhc.london.on.ca for more information or if you have any questions! Find the PP+ email and link to the website below:



Email: possibilitiesprojectplus@sjhc.london.on.ca | <https://www.possibilitiesprojectplus.ca/>

TAKE A LOOK AT SPINAL CORD ESSENTIALS

Spinal Cord Essentials

Spinal Cord Essentials is a health information hub where patients can find various materials on how to navigate life with spinal cord injury. It was built to help patients through the various stages of recovery and make for a safe transition to their communities.

Sandra Mills, the Patient Education and Engagement Lead in the Spinal Cord Rehab Program in Toronto, says the website will make a huge difference for patient's wanting to access this information.

"Newly injured patients will now have these resources available as needed and can start the learning process earlier," Sandra says. "We also continue to add new material and review information to ensure patients are getting the most current, evidence-based information."

Available online and in hard copy, more than 85 resources can be found in English, French, Chinese (Traditional) Farsi and Spanish. Some handouts in Arabic and Portuguese have recently been added as well, showcasing the program's commitment to equity among their patient population.



The materials cover a wide range of topics, split into five different domains including: **self-care, general health, mobility, community living, planning and contacts**. These categories include topics from how to manage bowel and bladder care to returning to driving.

Providing patients with the best resources:

Michel LeFeuvre-Watson is an inpatient at Toronto Rehab's Lyndhurst Centre, "'Intermittent Catheterization (IC) for Women' was a big one for me to have access to," Michel says. "This information gave me hope that I would be able to do this procedure with the care and guidance of the nursing staff here."

The website means that even after a patient leaves the centre, they still have the support and information to do these everyday tasks. "Learning to do my own IC's was, in reality, more stressful for me than relearning how to walk again," Michel says. "The information is clear, concise and it is really great that they are readily available now not only at Lyndhurst but also online. "This will make things much less stressful when I get home."

Users can access the materials and more at www.spinalcordessentials.ca or by visiting the [Spinal Rehab section](#) of the Toronto Rehab's website.

CONSORTIUM UPDATES

Upcoming dates ...



Network Meeting:

- Oct 25th, 2023

Summit & Showcase:

- Nov 21st, 2023

A big thanks to Ivie Evbuomwan for all of her hard work!



Thank you Ivie for being a dedicated Consortium team member and Implementation Support! We wish you the best in your future endeavours.



Dr. Cathy Craven
Evaluation Lead



Farnoosh Farahani
Consortium Manager



Dr. Dalton Wolfe
Implementation Lead



Julianne Hong
Implementation Support



Jordan Eggiman-Ketter
Implementation Support



Maryam Omidvar
Research Associate



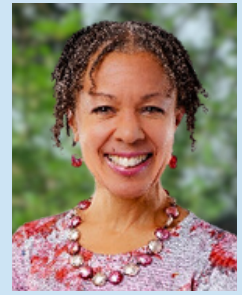
Saina Aliabadi
Research Associate



Mohammad Alavinia
Steering Committee



Julia Rybkina
Communications Liaison



Andrea Brown
Implementation Mentor

For feedback or future contributions, contact:
JULIANNE HONG / JORDAN EGGIMAN-KETTER
Implementation Support
julianne.hong@sjhc.london.on.ca
jordan.eggiman-ketter@sjhc.london.on.ca

SAVE THE DATE

SCI NATIONAL CONFERENCE

November 21-23, 2023

To find more information and register, scan the QR code!

- Consortium Summit & Showcase: **November 21, 2023**
- Last Date to Register: **November 23, 2023**
- **LATE BREAKING POSTER SUBMISSION: SEPTEMBER 15, 2023**



INCLUSIVITY & ENGAGEMENT

10TH NATIONAL SPINAL CORD INJURY CONFERENCE

SAVE THE DATE: NOV 21 - 23, 2023

Beanfield Centre, Toronto, (ON)



 @CSCI_RA

 cscira.ca

CANADIAN SPINAL CORD INJURY REHABILITATION ASSOCIATION



CSCI RA



Don't miss the chance book your accommodations before they sell out! Reservations will be at Hotel X For more information, please scan the QR code.